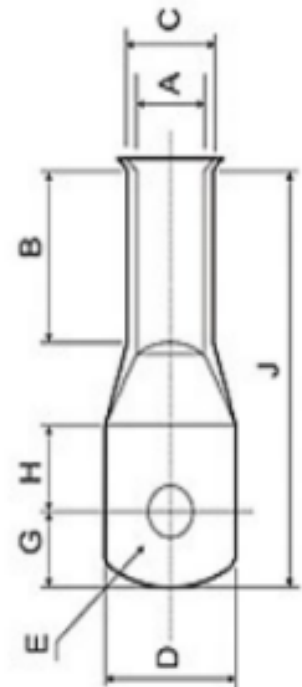


Bell Mouth Copper Lugs

InterActive
Cables

Part No	Stud hole	mm	mm	mm	mm	mm
Size	E	C	D	G	B	J
BM16-6	6.5	7.9	11	7	19	39
BM16-8	8.4	7.9	14	7	19	39
BM16-10	10.2	7.9	16	8	19	41
BM16-12	13	7.9	18	10	19	46
BM25-6	6.5	9.5	13.5	7	21	41
BM25-8	8.4	9.5	13.5	7	21	41
BM25-10	10.2	9.5	16	9	21	44
BM25-12	13	9.5	18	10	21	48
BM35-6	6.5	11.5	16	9	21	45
BM35-10	8.4	11.5	16	9	21	45
BM35-10	10.2	11.5	18.5	9	21	45
BM35-12	13	11.5	20	11	22	51
BM50-6	6.5	12.8	18	8	22	46
BM50-8	8.4	12.8	18	8	22	46
BM50-10	10.2	12.8	18	8	22	46
BM50-12	13	12.8	21	11	22	52
BM70-6	6.5	14.6	21	11	24	54
BM70-8	8.4	14.6	21	11	24	54
BM70-10	10.2	14.6	21	11	24	54
BM70-12	13	14.6	21	11	24	54
BM70-16	17	14.6	26	14	24	61
BM95-8	8.4	17.4	25	12	27	60
BM95-10	10.2	17.4	25	12	27	60
BM95-12	13	17.4	25	12	27	60
BM95-16	17	17.4	25	14	27	61
BM120-8	8.4	20.6	30	12	30	64
BM120-10	10.2	20.6	30	12	30	64
BM120-12	13	20.6	30	12	30	64
BM120-16	17	20.6	30	16	30	72
BM150-8	8.4	22.3	31	16	30	75
BM150-10	10.2	22.3	31	16	30	75
BM150-12	13	22.3	31	16	30	75
BM150-16	17	22.3	33	16	30	75
BM185-10	10.2	24.2	36	16	32	74
BM185-12	13	24.2	36	18	32	79
BM185-16	17	24.2	36	18	32	79
BM240-BL		28.5	41	21	38	92
BM240-10	10.2	28.5	41	21	38	92
BM240-12	13	28.5	41	21	38	92
BM240-16	17	28.5	41	21	38	92
BM300-BL		31.9	46	23	42	101
BM300-12	13	31.9	46	23	42	101
BM300-16	17	31.9	46	23	42	101
BM400-BL		34.9	50	24	44	107
BM400-12	13	34.9	50	24	44	107
BM400-16	17	34.9	50	24	44	107
BM500-BL		38.1	56	27	50	119



Bell Mouth Copper Cable Lugs for flexible cables